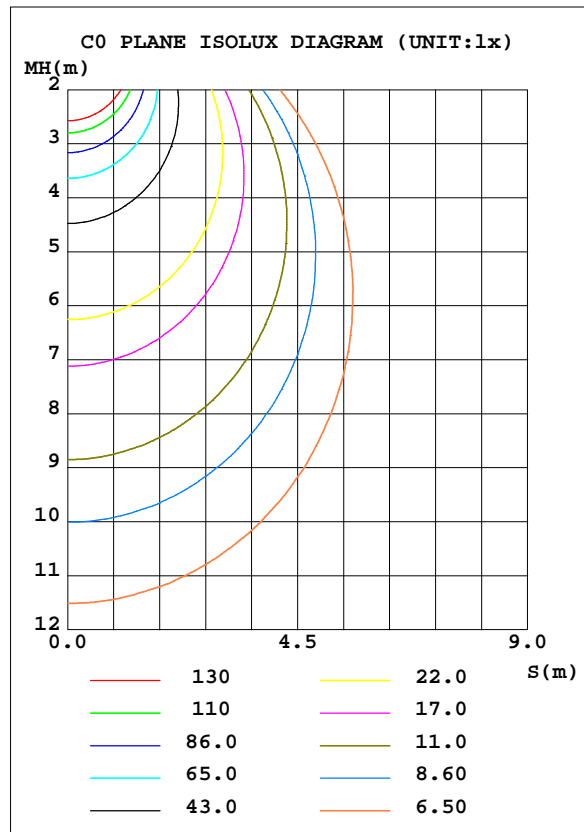
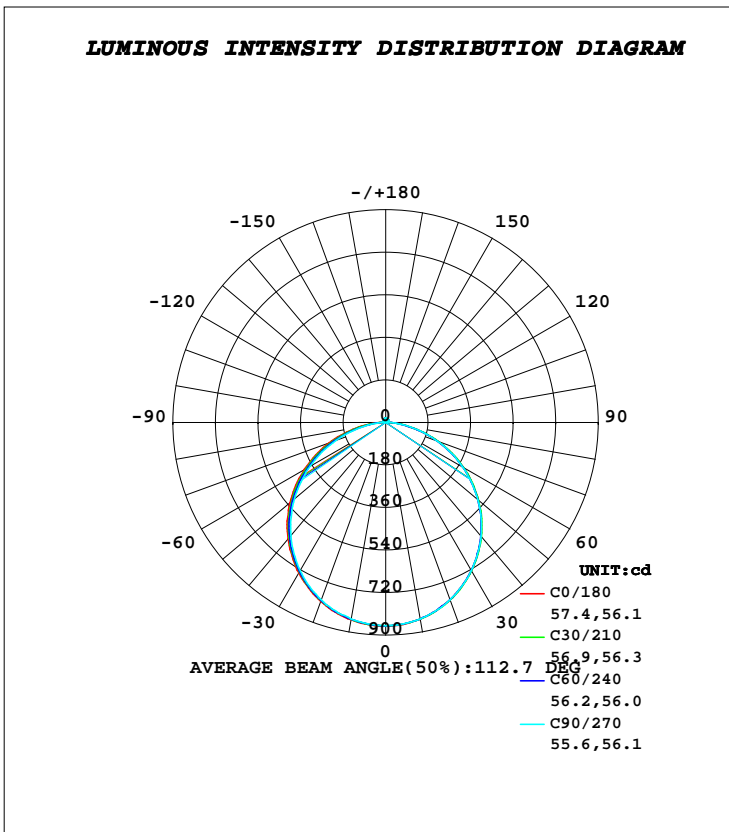


LUMINAIRE PHOTOMETRIC TEST REPORT

Test:U:220.60V I:0.1000A P:21.500W PF:0.9630 Freq:50.00Hz Lamp Flux:2538.72x1 lm		
NAME: A320 22W 000 4000K	TYPE:LED	
MFR.:		

DATA OF LAMP		PHOTOMETRIC DATA Eff: 118.08 lm/W			
MODEL	A320 22W 000 4000K	I _{max} (cd)	863.2	S/MH(C0/180)	1.25
NOMINAL POWER(W)	22	LOR(%)	100.0	S/MH(C90/270)	1.25
RATED VOLTAGE(V)	220	TOTAL FLUX(lm)	2538.7	η UP, DN(C0-180)	1.4, 48.4
NOMINAL FLUX(lm)	2538.72	CIE CLASS	DIRECT	η UP, DN(C180-360)	1.4, 48.7
LAMPS INSIDE	1	η up(%)	2.8	CIBSE SHR NOM	1.25
TEST VOLTAGE(V)	220.6	η down(%)	97.2	CIBSE SHR MAX	1.35



C Range: 0 - 360DEG
C Interval: 30.0DEG
Test Speed: HIGH
Temperature: 25.3DEG
Operators: DAMIN
Test Date: 2018-11-12

γ Range: 0 - 180DEG
γ Interval: 1.0DEG
Test System: EVERFINE GO-2000B_V1 SYSTEM V2.0.267
Humidity: 65.0%
Test Distance: 8.000m [K=0.7063]
Remarks:

ZONAL FLUX DIAGRAM

ZONAL FLUX DIAGRAM:

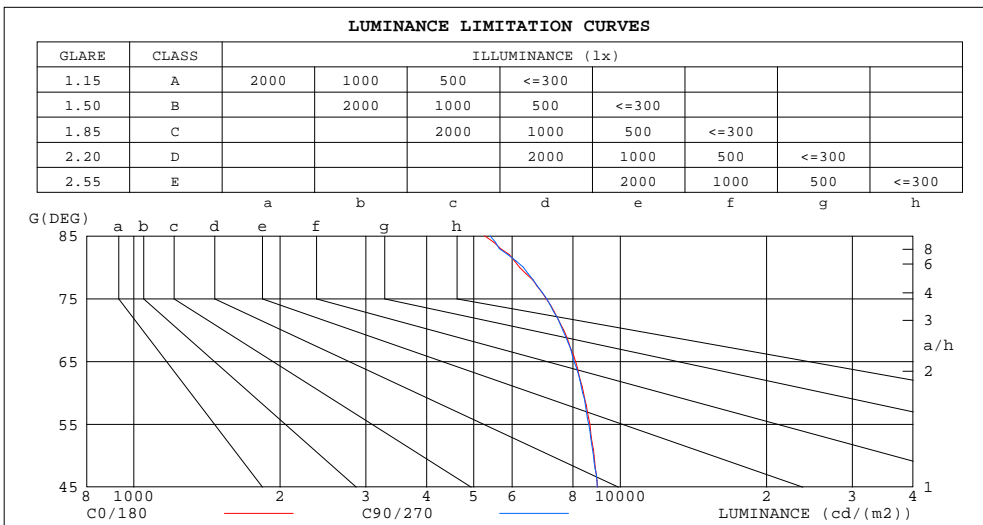
γ	C0	C45	C90	C135	C180	C225	C270	C315	γ	Φ zone	Φ total	%lum,lamp
10	845.6	844.6	843.9	842.0	847.7	845.8	844.9	840.6	0- 10	81.28	81.28	3.2,3.2
20	798.3	798.1	798.5	796.1	805.2	802.0	799.1	795.3	10- 20	232.8	314.0	12.4,12.4
30	724.0	725.0	725.1	723.5	735.9	730.2	723.6	722.1	20- 30	352.7	666.7	26.3,26.3
40	627.9	628.9	627.7	627.2	642.5	634.5	624.7	625.0	30- 40	425.6	1092	43,43
50	511.0	511.1	509.9	509.8	529.9	518.0	504.2	508.0	40- 50	442.2	1535	60.4,60.4
60	378.2	378.0	376.3	377.6	397.1	383.4	367.8	374.4	50- 60	399.5	1934	76.2,76.2
70	235.5	234.8	234.6	235.2	255.2	239.5	224.3	232.5	60- 70	304.9	2239	88.2,88.2
80	97.11	98.04	98.75	99.36	116.4	100.6	88.51	97.60	70- 80	175.2	2414	95.1,95.1
90	6.516	7.390	7.206	8.403	13.18	10.46	7.608	10.96	80- 90	52.48	2467	97.2,97.2
100	7.860	7.495	7.163	7.246	8.364	8.094	8.165	8.405	90-100	8.354	2475	97.5,97.5
110	9.645	9.255	9.016	8.998	9.799	9.471	9.630	9.801	100-110	9.100	2484	97.8,97.8
120	11.30	10.97	10.75	10.68	11.27	11.01	11.19	11.30	110-120	10.15	2494	98.2,98.2
130	13.00	12.71	12.48	12.42	12.71	12.52	12.64	12.74	120-130	10.60	2505	98.7,98.7
140	14.55	14.40	14.14	14.09	14.07	13.89	14.03	14.06	130-140	10.37	2515	99.1,99.1
150	15.99	15.80	15.67	15.54	15.45	15.25	15.44	15.37	140-150	9.300	2524	99.4,99.4
160	17.40	17.14	17.14	16.94	16.87	16.68	16.96	16.82	150-160	7.498	2532	99.7,99.7
170	18.56	18.35	18.46	18.17	18.16	18.01	18.34	18.15	160-170	4.977	2537	99.9,99.9
180	18.92	18.85	19.20	18.78	18.93	18.85	19.21	18.80	170-180	1.771	2539	100,100
DEG	LUMINOUS INTENSITY:cd									UNIT:lm		

C Range: 0 - 360DEG
 C Interval: 30.0DEG
 Test Speed: HIGH
 Temperature:25.3DEG
 Operators:DAMIN
 Test Date:2018-11-12

γ Range: 0 - 180DEG
 γ Interval: 1.0DEG
 Test System:EVERFINE GO-2000B_V1 SYSTEM V2.0.267
 Humidity:65.0%
 Test Distance:8.000m [K=0.7063]
 Remarks:

LUMINANCE LIMITATION CURVES

Test:U:220.60V I:0.1000A P:21.500W PF:0.9630 Freq:50.00Hz Lamp Flux:2538.72x1 lm		
NAME: A320 22W 000 4000K	TYPE:LED	
MFR.:		



LUMINANCE cd/(m2)		
G(DEG)	C0/180	C90/270
85	5265	5398
80	6214	6319
75	7037	7058
70	7652	7622
65	8096	8037
60	8404	8363
55	8661	8619
50	8833	8814
45	8992	8975

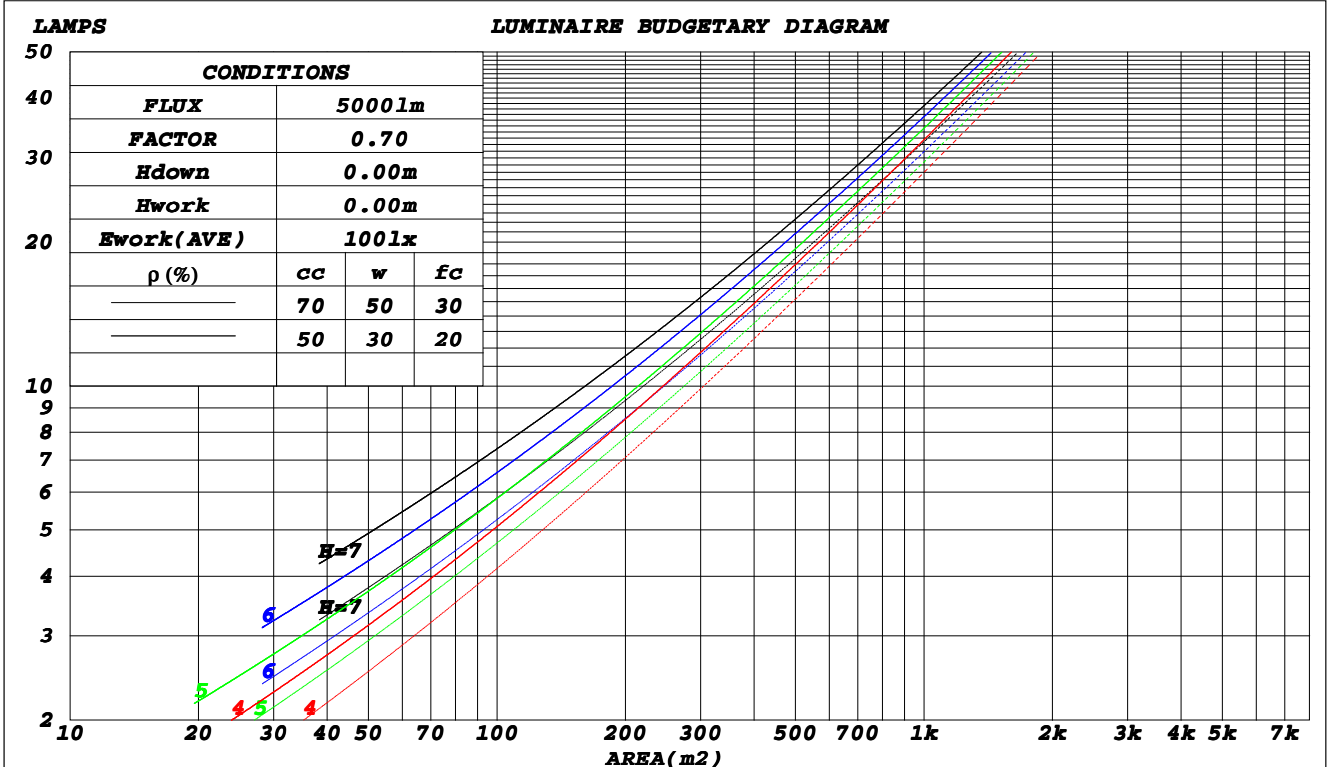
C Range: 0 - 360DEG
C Interval: 30.0DEG
Test Speed: HIGH
Temperature: 25.3DEG
Operators: DAMIN
Test Date: 2018-11-12

γ Range: 0 - 180DEG
γ Interval: 1.0DEG
Test System: EVERFINE GO-2000B_V1 SYSTEM V2.0.267
Humidity: 65.0%
Test Distance: 8.000m [K=0.7063]
Remarks:

CU AND LUMINAIRE BUDGETARY ESTIMATE DIAGRAM

Test:U:220.60V I:0.1000A P:21.500W PF:0.9630 Freq:50.00Hz Lamp Flux:2538.72x1 lm		
NAME: A320 22W 000 4000K	TYPE:LED	
MFR.:		

ρcc	80%			70%			50%			30%			10%			0
	50%	30%	10%	50%	30%	10%	50%	30%	10%	50%	30%	10%	50%	30%	10%	0
ρw	0															
ρfc	0															
RCR	RCR:Room Cavity Ratio															
	Coefficients of Utilization(CU)															
0.0	1.18	1.18	1.18	1.15	1.15	1.15	1.10	1.10	1.10	1.04	1.04	1.04	.99	.99	.99	.97
1.0	1.03	.99	.95	1.01	.97	.93	.96	.93	.90	.91	.89	.86	.87	.85	.83	.81
2.0	.90	.83	.77	.88	.81	.76	.84	.78	.74	.80	.75	.72	.76	.73	.70	.67
3.0	.79	.70	.64	.77	.69	.63	.73	.67	.62	.70	.65	.60	.67	.63	.59	.57
4.0	.70	.61	.54	.68	.60	.54	.65	.58	.52	.63	.56	.51	.60	.55	.50	.48
5.0	.62	.53	.46	.61	.52	.46	.58	.51	.45	.56	.50	.45	.54	.48	.44	.42
6.0	.56	.47	.40	.55	.46	.40	.53	.45	.40	.51	.44	.39	.49	.43	.38	.36
7.0	.51	.42	.36	.50	.41	.35	.48	.40	.35	.46	.40	.35	.45	.39	.34	.32
8.0	.46	.38	.32	.45	.37	.32	.44	.36	.31	.42	.36	.31	.41	.35	.31	.29
9.0	.42	.34	.29	.42	.34	.28	.40	.33	.28	.39	.33	.28	.38	.32	.28	.26
10.0	.39	.31	.26	.38	.31	.26	.37	.30	.26	.36	.30	.25	.35	.29	.25	.23



C Range: 0 - 360DEG
 C Interval: 30.0DEG
 Test Speed: HIGH
 Temperature: 25.3DEG
 Operators: DAMIN
 Test Date: 2018-11-12

γ Range: 0 - 180DEG
 γ Interval: 1.0DEG
 Test System: EVERFINE GO-2000B_V1 SYSTEM V2.0.267
 Humidity: 65.0%
 Test Distance: 8.000m [K=0.7063]
 Remarks:

WEC AND CCEC

Test:U:220.60V I:0.1000A P:21.500W PF:0.9630 Freq:50.00Hz Lamp Flux:2538.72x1 lm		
NAME: A320 22W 000 4000K	TYPE:LED	
MFR.:		

ρ_{cc}	80%			70%			50%			30%			10%			0
ρ_w	50%	30%	10%	50%	30%	10%	50%	30%	10%	50%	30%	10%	50%	30%	10%	0
ρ_{fc}	20%			20%			20%			20%			20%			0
RCR	RCR:Room Cavity Ratio						Wall Exitance Coefficients(WEC)									
0.0																
1.0	.311	.177	.056	.303	.173	.055	.289	.166	.053	.275	.159	.051	.262	.152	.049	
2.0	.292	.160	.049	.285	.157	.048	.272	.151	.047	.260	.146	.046	.248	.140	.044	
3.0	.270	.144	.043	.264	.141	.042	.252	.136	.041	.241	.132	.041	.231	.128	.040	
4.0	.249	.129	.038	.243	.127	.038	.233	.123	.037	.223	.120	.036	.214	.116	.035	
5.0	.230	.117	.034	.225	.115	.034	.216	.112	.033	.207	.109	.032	.199	.106	.032	
6.0	.213	.107	.031	.209	.105	.030	.200	.103	.030	.193	.100	.029	.185	.097	.029	
7.0	.198	.098	.028	.194	.097	.028	.187	.094	.027	.180	.092	.027	.173	.090	.026	
8.0	.185	.090	.025	.182	.089	.025	.175	.087	.025	.168	.085	.025	.162	.083	.024	
9.0	.174	.084	.023	.170	.083	.023	.164	.081	.023	.158	.079	.023	.153	.078	.022	
10.0	.163	.078	.022	.160	.077	.022	.155	.076	.021	.149	.074	.021	.144	.073	.021	

ρ_{cc}	80%			70%			50%			30%			10%			0
ρ_w	50%	30%	10%	50%	30%	10%	50%	30%	10%	50%	30%	10%	50%	30%	10%	0
ρ_{fc}	20%			20%			20%			20%			20%			0
RCR	RCR:Room Cavity Ratio						Ceiling Cavity Exitance Coefficients(CCEC)									
0.0																
1.0	.212	.212	.212	.181	.181	.181	.124	.124	.124	.071	.071	.071	.023	.023	.023	
2.0	.194	.154	.120	.166	.132	.104	.114	.092	.072	.066	.053	.042	.021	.017	.014	
3.0	.187	.136	.096	.160	.118	.084	.110	.082	.059	.063	.048	.035	.020	.015	.011	
4.0	.179	.123	.081	.154	.106	.070	.106	.074	.049	.061	.043	.029	.020	.014	.010	
5.0	.172	.113	.069	.147	.098	.060	.101	.068	.043	.059	.040	.025	.019	.013	.008	
6.0	.164	.105	.062	.141	.091	.054	.097	.063	.038	.057	.037	.023	.018	.012	.007	
7.0	.158	.098	.056	.136	.085	.048	.094	.059	.034	.054	.035	.020	.018	.011	.007	
8.0	.151	.092	.051	.130	.080	.045	.090	.056	.032	.052	.033	.019	.017	.011	.006	
9.0	.145	.087	.048	.125	.075	.042	.087	.053	.030	.050	.031	.018	.016	.010	.006	
10.0	.139	.083	.045	.120	.072	.039	.083	.051	.028	.049	.030	.017	.016	.010	.006	

C Range: 0 - 360DEG
C Interval: 30.0DEG
Test Speed: HIGH
Temperature:25.3DEG
Operators:DAMIN
Test Date:2018-11-12

γ Range: 0 - 180DEG
 γ Interval: 1.0DEG
Test System:EVERFINE GO-2000B_V1 SYSTEM V2.0.267
Humidity:65.0%
Test Distance:8.000m [K=0.7063]
Remarks:

UGR(Unified Glare Rating) Table

Test:U:220.60V I:0.1000A P:21.500W PF:0.9630 Freq:50.00Hz Lamp Flux:2538.72x1 lm		
NAME: A320 22W 000 4000K	TYPE:LED	
MFR.:		

ceiling/cavity	0.7	0.7	0.5	0.5	0.3	0.7	0.7	0.5	0.5	0.3
walls	0.5	0.3	0.5	0.3	0.3	0.5	0.3	0.5	0.3	0.3
working plane	0.2	0.2	0.2	0.2	0.2	0.2	0.2	0.2	0.2	0.2
Room dimensions	Viewed crosswise					Viewed endwise				
x = 2H y = 2H	17.0	18.5	17.3	18.7	19.0	16.9	18.4	17.3	18.7	18.9
3H	18.5	19.9	18.8	20.2	20.5	18.4	19.8	18.8	20.1	20.4
4H	19.1	20.4	19.5	20.7	21.0	19.0	20.3	19.4	20.6	21.0
6H	19.5	20.7	19.9	21.1	21.4	19.5	20.7	19.8	21.0	21.3
8H	19.6	20.8	20.0	21.2	21.5	19.6	20.8	20.0	21.1	21.5
12H	19.7	20.8	20.1	21.2	21.6	19.7	20.8	20.0	21.1	21.5
4H 2H	17.6	18.9	17.9	19.2	19.5	17.6	18.9	17.9	19.2	19.5
3H	19.3	20.4	19.7	20.8	21.1	19.2	20.4	19.6	20.7	21.1
4H	20.0	21.0	20.4	21.4	21.8	19.9	21.0	20.4	21.3	21.7
6H	20.5	21.5	21.0	21.9	22.3	20.5	21.4	20.9	21.8	22.2
8H	20.7	21.6	21.2	22.0	22.4	20.6	21.5	21.1	21.9	22.4
12H	20.8	21.6	21.3	22.1	22.5	20.8	21.5	21.2	22.0	22.5
8H 4H	20.3	21.1	20.7	21.5	22.0	20.2	21.0	20.6	21.5	21.9
6H	20.9	21.7	21.4	22.1	22.6	20.9	21.6	21.3	22.0	22.5
8H	21.2	21.8	21.7	22.3	22.8	21.1	21.7	21.6	22.2	22.7
12H	21.4	22.0	21.9	22.5	23.0	21.3	21.9	21.8	22.3	22.9
12H 4H	20.3	21.0	20.7	21.5	21.9	20.2	21.0	20.7	21.4	21.9
6H	21.0	21.6	21.5	22.1	22.6	20.9	21.5	21.4	22.0	22.5
8H	21.3	21.8	21.8	22.3	22.9	21.2	21.7	21.7	22.2	22.8
Variations with the observer position at spacings:										
S = 1.0H	+ 0.2 / - 0.2					+ 0.2 / - 0.2				
1.5H	+ 0.2 / - 0.3					+ 0.2 / - 0.3				
2.0H	+ 0.2 / - 0.3					+ 0.2 / - 0.3				

CIE Pub.117, 2539 lm Total Lamp Luminous Flux Correct ($8\log(F/F0) = 3.2$)

C Range: 0 - 360DEG
 C Interval: 30.0DEG
 Test Speed: HIGH
 Temperature:25.3DEG
 Operators:DAMIN
 Test Date:2018-11-12

γ Range: 0 - 180DEG
 γ Interval: 1.0DEG
 Test System:EVERFINE GO-2000B_V1 SYSTEM V2.0.267
 Humidity:65.0%
 Test Distance:8.000m [K=0.7063]
 Remarks:

UTILIZATION FACTORS TABLE

Test:U:220.60V I:0.1000A P:21.500W PF:0.9630 Freq:50.00Hz Lamp Flux:2538.72x1 lm		
NAME: A320 22W 000 4000K	TYPE:LED	
MFR.:		

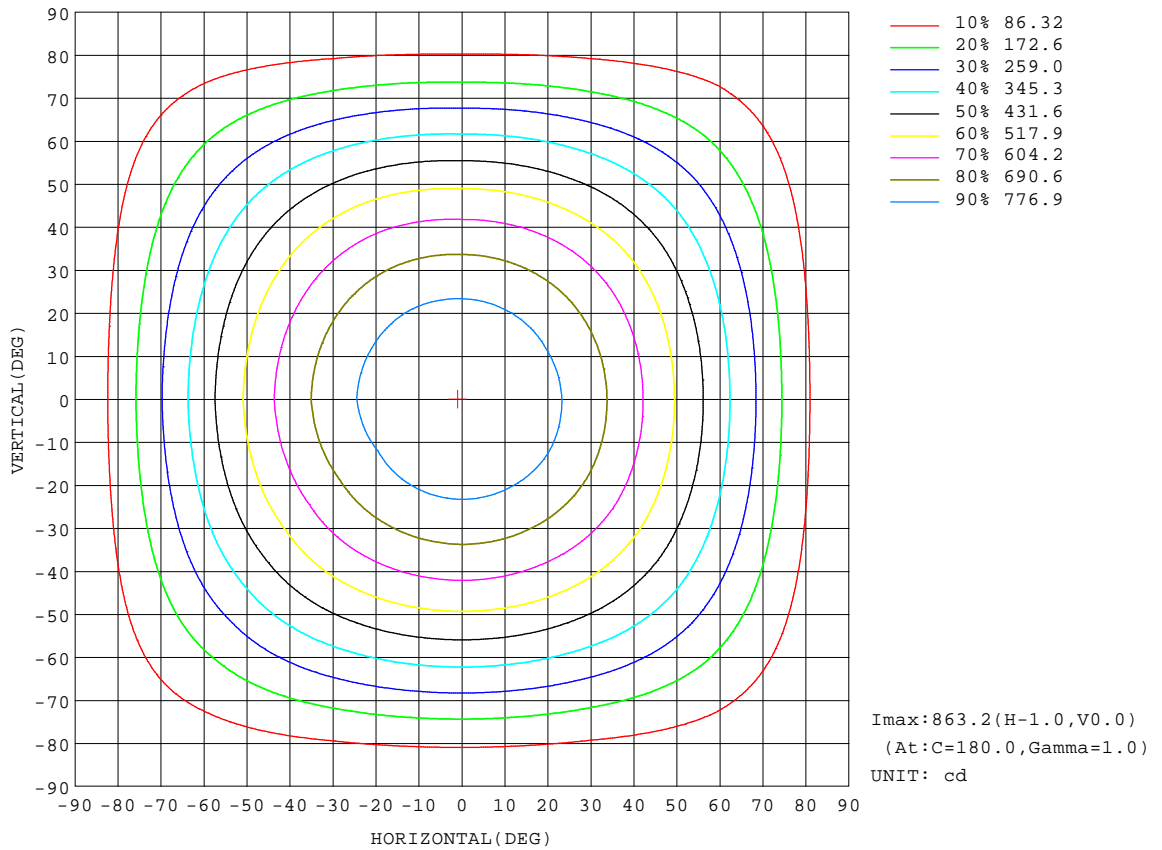
REFLECTANCE										
Ceiling	0.8	0.8	0.8	0.7	0.7	0.7	0.5	0.5	0.5	0
Walls	0.7	0.5	0.3	0.7	0.5	0.3	0.7	0.5	0.3	0
Working plane	0.2	0.2	0.2	0.2	0.2	0.2	0.2	0.2	0.2	0
ROOM INDEX	UTILIZATION FACTORS(PERCENT) $k(RI) \times RCR = 5$									
k = 0.60	57	45	38	56	45	38	54	44	38	31
0.80	67	55	47	65	54	47	63	53	47	40
1.00	75	64	56	74	63	56	71	64	55	48
1.25	82	71	64	80	71	64	77	69	63	55
1.50	87	77	70	85	76	69	82	74	68	60
2.00	94	85	79	92	84	78	88	81	76	68
2.50	98	90	84	96	88	83	91	85	81	72
3.00	101	94	89	99	92	87	94	89	85	76
4.00	105	99	95	103	97	93	98	94	90	80
5.00	108	103	99	105	101	97	100	97	93	83
ROOM INDEX	UF(total)									Direct
According to DIN EN 13032-2 2004			Suspended				SHRNOM = 1.25			

C Range: 0 - 360DEG
C Interval: 30.0DEG
Test Speed: HIGH
Temperature:25.3DEG
Operators:DAMIN
Test Date:2018-11-12

γ Range: 0 - 180DEG
 γ Interval: 1.0DEG
Test System:EVERFINE GO-2000B_V1 SYSTEM V2.0.267
Humidity:65.0%
Test Distance:8.000m [K=0.7063]
Remarks:

ISOCANDELA DIAGRAM

Test:U:220.60V I:0.1000A P:21.500W PF:0.9630 Freq:50.00Hz Lamp Flux:2538.72x1 lm		
NAME: A320 22W 000 4000K	TYPE:LED	
MFR.:		



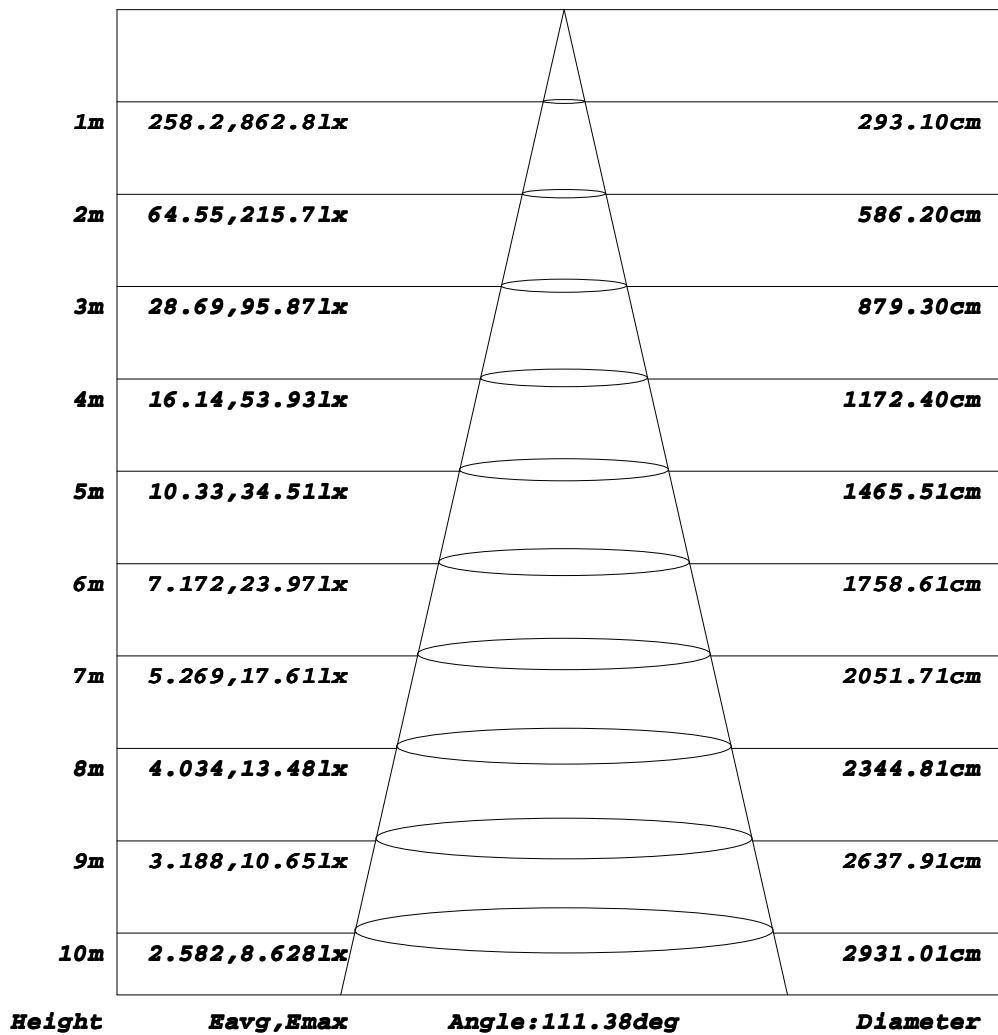
C Range: 0 - 360DEG
C Interval: 30.0DEG
Test Speed: HIGH
Temperature: 25.3DEG
Operators: DAMIN
Test Date: 2018-11-12

γ Range: 0 - 180DEG
γ Interval: 1.0DEG
Test System: EVERFINE GO-2000B_V1 SYSTEM V2.0.267
Humidity: 65.0%
Test Distance: 8.000m [K=0.7063]
Remarks:

AAI Figure

Test:U:220.60V I:0.1000A P:21.500W PF:0.9630 Freq:50.00Hz Lamp Flux:2538.72x1 lm		
NAME: A320 22W 000 4000K	TYPE:LED	
MFR.:		

Flux out:1783 lm



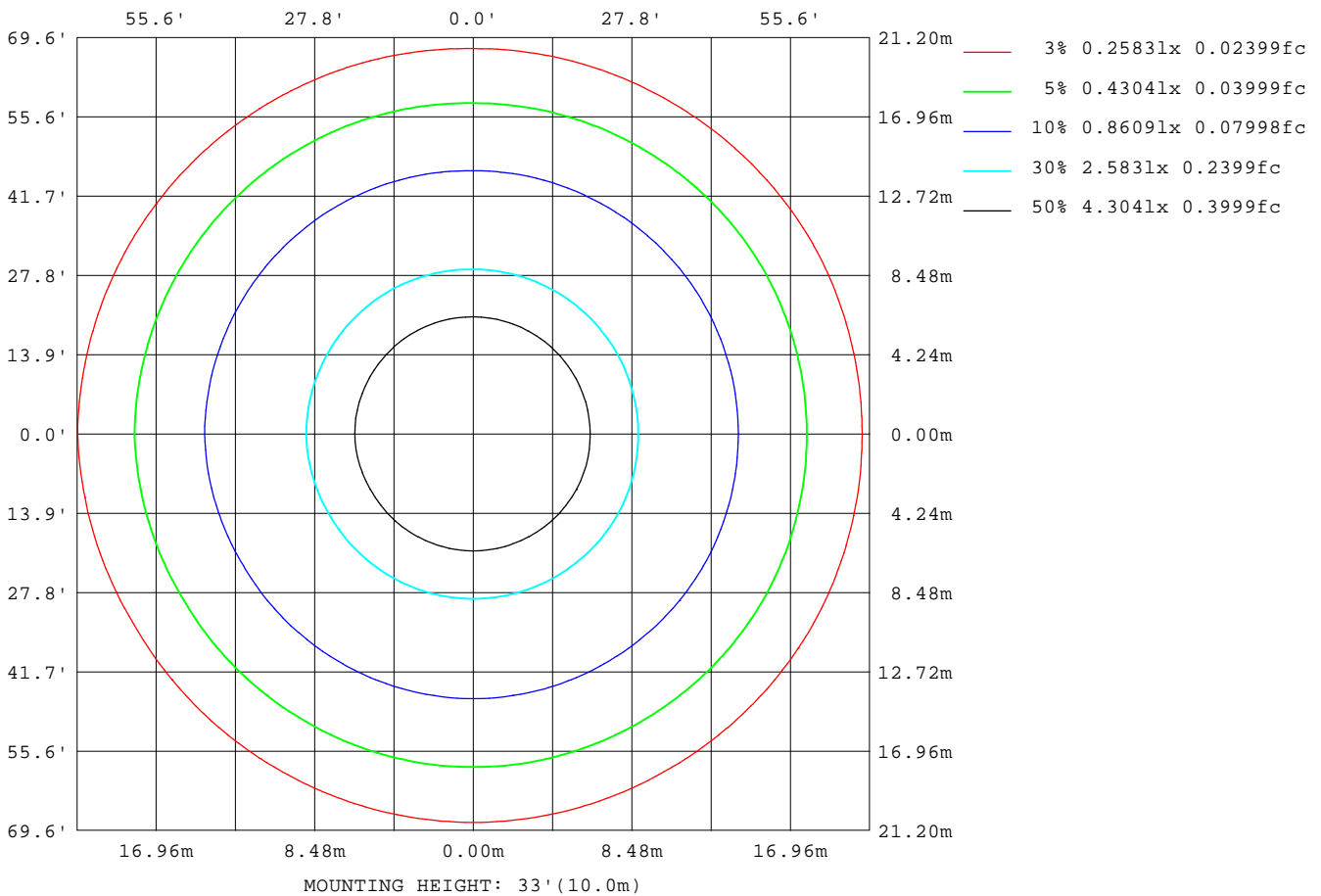
Note: The Curves indicate the illuminated area and the average illumination when the luminaire is at different distance.

C Range: 0 - 360DEG
C Interval: 30.0DEG
Test Speed: HIGH
Temperature: 25.3DEG
Operators: DAMIN
Test Date: 2018-11-12

γ Range: 0 - 180DEG
γ Interval: 1.0DEG
Test System: EVERFINE GO-2000B_V1 SYSTEM V2.0.267
Humidity: 65.0%
Test Distance: 8.000m [K=0.7063]
Remarks:

ISOLUX DIAGRAM

Test:U:220.60V I:0.1000A P:21.500W PF:0.9630 Freq:50.00Hz Lamp Flux:2538.72x1 lm		
NAME: A320 22W 000 4000K	TYPE:LED	
MFR.:		



C Range: 0 - 360DEG
C Interval: 30.0DEG
Test Speed: HIGH
Temperature: 25.3DEG
Operators: DAMIN
Test Date: 2018-11-12

γ Range: 0 - 180DEG
γ Interval: 1.0DEG
Test System: EVERFINE GO-2000B_V1 SYSTEM V2.0.267
Humidity: 65.0%
Test Distance: 8.000m [K=0.7063]
Remarks:

LED Avg.L Report

Test:U:220.60V I:0.1000A P:21.500W PF:0.9630 Freq:50.00Hz Lamp Flux:2538.72x1 lm		
NAME: A320 22W 000 4000K	TYPE:LED	
MFR.:		

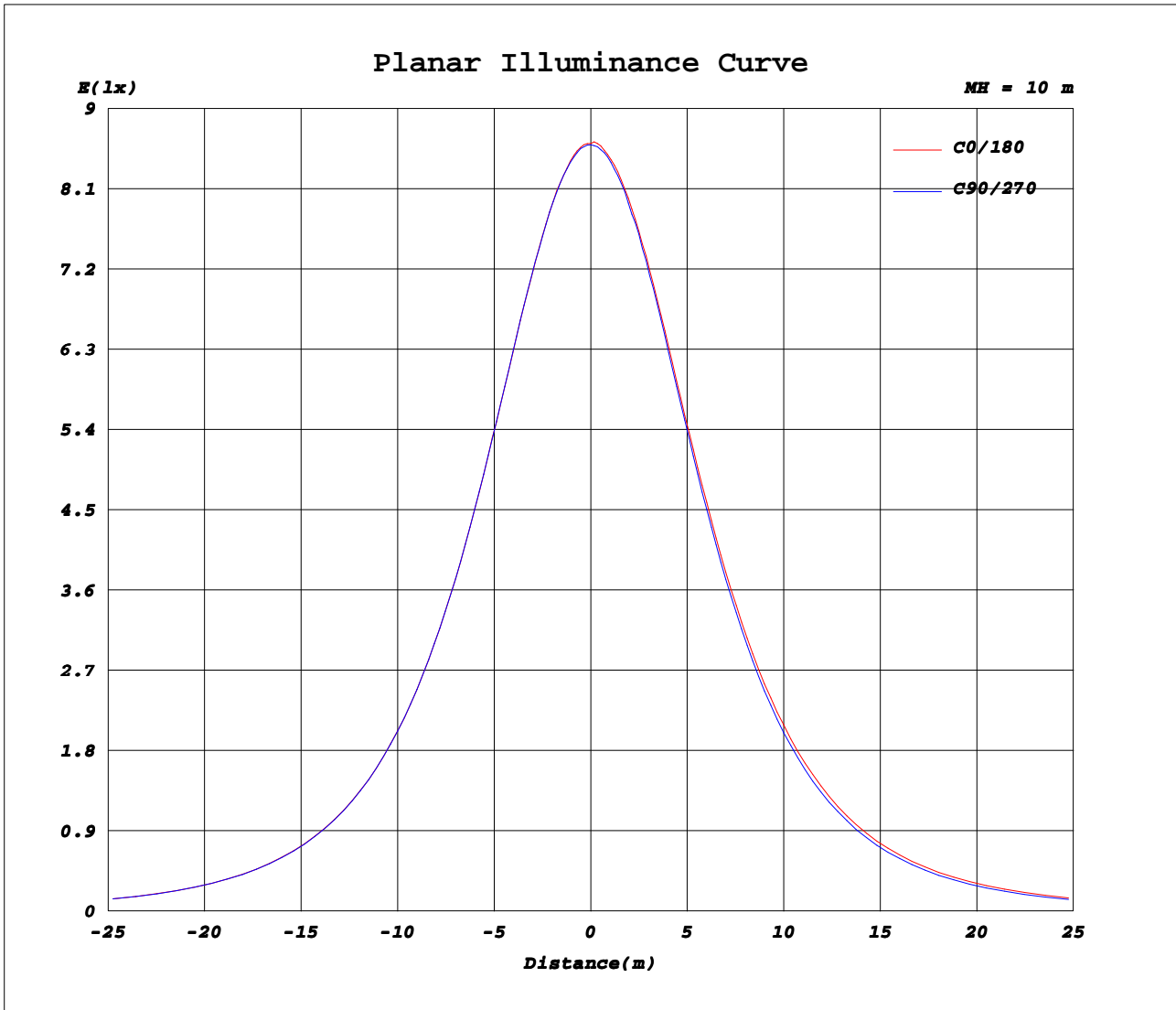
AvgL	cd/m2
L_0~180(65)av	8349
L_0~180(75)av	7463
L_0~180(85)av	6277
L_90~270(65)av	7928
L_90~270(75)av	6833
L_90~270(85)av	4963
L_45(65)av	8084
L_45(75)av	7063
L_45(85)av	5836

Standard: GB/T 29293-2012

C Range: 0 - 360DEG
C Interval: 30.0DEG
Test Speed: HIGH
Temperature:25.3DEG
Operators:DAMIN
Test Date:2018-11-12

γ Range: 0 - 180DEG
γ Interval: 1.0DEG
Test System:EVERFINE GO-2000B_V1 SYSTEM V2.0.267
Humidity:65.0%
Test Distance:8.000m [K=0.7063]
Remarks:

Planar Illuminance Curve



C Range: 0 - 360DEG
C Interval: 30.0DEG
Test Speed: HIGH
Temperature: 25.3DEG
Operators: DAMIN
Test Date: 2018-11-12

γ Range: 0 - 180DEG
γ Interval: 1.0DEG
Test System: EVERFINE GO-2000B_V1 SYSTEM V2.0.267
Humidity: 65.0%
Test Distance: 8.000m [K=0.7063]
Remarks:

LUMINOUS DISTRIBUTION INTENSITY DATA

Test:U:220.60V I:0.1000A P:21.500W PF:0.9630 Freq:50.00Hz Lamp Flux:2538.72x1 lm		
NAME: A320 22W 000 4000K	TYPE:LED	
MFR.:		

Table--1

UNIT: cd

C (DEG) \ γ (DEG)	0	30	60	90	120	150	180	210	240	270	300	330							
0	861	861	860	859	859	856	861	861	860	859	859	856							
5	857	856	857	856	855	851	858	857	856	856	854	850							
10	846	845	845	844	844	840	848	846	846	845	843	838							
15	825	826	826	824	824	821	830	828	828	825	822	820							
20	798	798	798	799	797	795	805	802	802	799	797	794							
25	765	765	764	765	763	762	773	770	769	765	762	761							
30	724	726	724	725	723	724	736	731	729	724	723	722							
35	678	681	677	678	677	678	691	686	684	677	676	678							
40	628	631	627	628	626	629	643	637	632	625	623	627							
45	572	575	571	571	570	573	591	581	577	566	569	571							
50	511	513	509	510	509	511	530	521	515	504	505	511							
55	447	448	444	445	443	447	464	457	448	438	439	445							
60	378	380	376	376	376	379	397	388	379	368	370	379							
65	308	309	305	306	306	308	327	318	307	297	300	309							
70	236	237	232	235	233	237	255	246	233	224	228	237							
75	164	167	161	164	163	167	184	174	161	154	159	166							
80	97.1	102	94.5	98.8	96.3	102	116	107	93.7	88.5	93.3	102							
85	41.3	45.4	42.1	42.3	43.3	46.9	57.2	51.1	42.6	35.5	42.7	50.7							
90	6.52	7.10	7.68	7.21	8.44	8.36	13.2	10.5	10.4	7.61	11.0	10.9							
95	7.01	7.21	6.75	6.39	6.71	7.92	7.76	8.09	7.70	7.51	7.92	8.29							
100	7.86	7.70	7.30	7.16	7.16	7.33	8.36	8.19	8.00	8.17	8.29	8.52							
105	8.76	8.34	8.22	8.09	8.07	8.16	9.08	8.73	8.72	8.88	8.99	9.16							
110	9.65	9.38	9.13	9.02	8.95	9.04	9.80	9.47	9.47	9.63	9.73	9.88							
115	10.5	10.3	10.0	9.91	9.82	9.89	10.5	10.2	10.2	10.4	10.5	10.6							
120	11.3	11.1	10.8	10.7	10.7	10.7	11.3	11.0	11.0	11.2	11.3	11.3							
125	12.1	12.0	11.7	11.6	11.5	11.5	12.0	11.8	11.8	11.9	12.0	12.1							
130	13.0	12.8	12.6	12.5	12.4	12.4	12.7	12.5	12.5	12.6	12.8	12.7							
135	13.8	13.7	13.5	13.3	13.3	13.3	13.4	13.2	13.2	13.4	13.4	13.4							
140	14.5	14.6	14.2	14.1	14.1	14.1	14.1	13.9	13.9	14.0	14.1	14.0							
145	15.3	15.3	14.9	14.9	14.8	14.8	14.8	14.6	14.5	14.8	14.8	14.6							
150	16.0	15.9	15.7	15.7	15.6	15.5	15.4	15.2	15.3	15.4	15.5	15.3							
155	16.7	16.5	16.4	16.4	16.3	16.2	16.1	15.9	16.0	16.2	16.2	15.9							
160	17.4	17.2	17.1	17.1	17.0	16.9	16.9	16.7	16.7	17.0	17.0	16.6							
165	18.0	17.9	17.7	17.8	17.6	17.6	17.5	17.3	17.4	17.7	17.7	17.3							
170	18.6	18.4	18.3	18.5	18.3	18.1	18.2	17.9	18.1	18.3	18.4	17.9							
175	18.9	18.7	18.8	19.1	18.7	18.4	18.6	18.4	18.6	18.9	18.8	18.4							
180	18.9	18.8	18.9	19.2	19.0	18.6	18.9	18.8	18.9	19.2	19.0	18.6							

C Range: 0 - 360DEG
C Interval: 30.0DEG
Test Speed: HIGH
Temperature:25.3DEG
Operators:DAMIN
Test Date:2018-11-12

γ Range: 0 - 180DEG
γ Interval: 1.0DEG
Test System:EVERFINE GO-2000B_V1 SYSTEM V2.0.267
Humidity:65.0%
Test Distance:8.000m [K=0.7063]
Remarks: